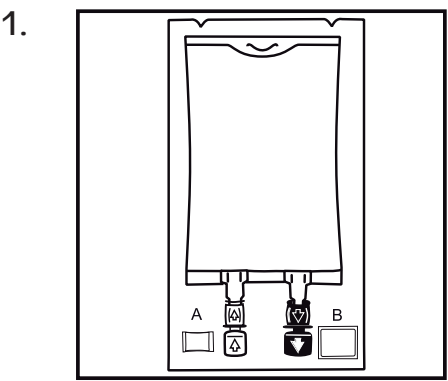
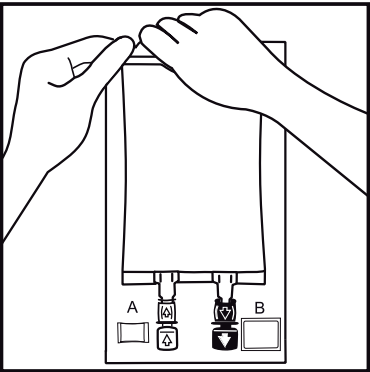




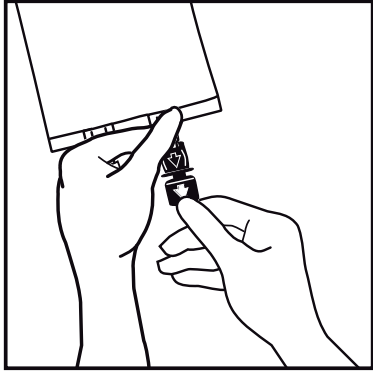
# Instruction for Use - Intralipid 30% Pharmacy Bulk Package Container



1. The integrity indicator (Oxalert™) A should be inspected before removing the overwrap. If the indicator is black the overwrap is damaged and the product should be discarded.

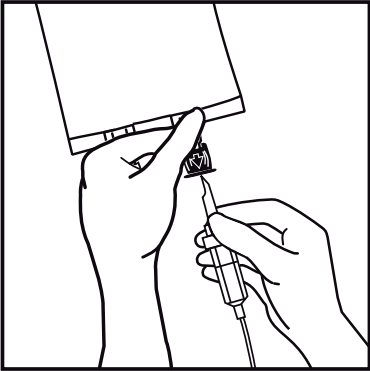


2. Remove the overwrap by tearing at the notch and pulling down along the container. The Oxalert sachet (A) and the oxygen absorber (B) should be discarded. Place the bag on a clean, flat surface or hang on a support hook.



3. Break off the tamper-evident arrow flag from the blue infusion port.

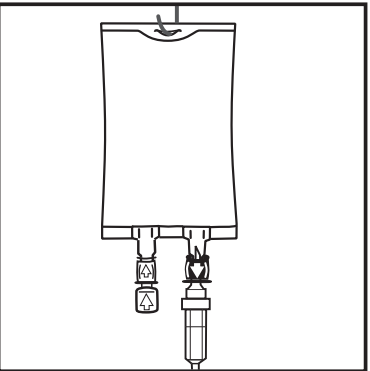
Use a compounding set with a diameter of 5.6 +/- 0.1 mm. Follow the instructions for use for the compounding set.



4. Hold the base of the infusion port firmly and insert the spike straight through the center of the septum by rotating the wrist slightly if needed.

**NOTE: Assure that the spike is inserted straight into the port and not at an angle.**

Inspect the bag and contents for particulate matter in a well-lit environment prior to use. Discard the bag if there are any signs of discoloration or particulates.



5. Hang the bag in the hanger cut and start transfer to the compounding bag.

